



SURVIVAL GUIDE

New burner or simply new to Feu au Lac? This guide exists to teach you everything you need to know.

Seriously, read it all!

The rest... we will create together.

What's in this guide ?

Hello!.....	2
Get involved.....	7
Practical Information.....	11
Sleeping.....	15
Eating.....	17
Security and Safety.....	18
Consent.....	23
Legal Disclaimer.....	25

Hello!

Dear Experimentalia members,

Member of Experimentalia? Yes, that's you! By joining Experimentalia, you will be co-creating our annual gathering: Le Feu au Lac 2026. Experimentalia is a Geneva-based association for the promotion of culture and art, inspired by Burning Man's 10+3 principles.

This year's theme is Intervals. The world doesn't exist only within things, but also between them: Objects separate, Intervals connect.

What will you bring? How will you combine it with what's not usually aligned? Join us and find out.

Le Feu au Lac is an event of Experimentalia, a non-profit association run entirely by volunteers.

Fees are set freely, covering a minimum amount to guarantee the smooth running of the event. We encourage you to support our artistic projects and the running of our organization by adding the amount of your choice when purchasing your ticket.

See you soon on the hill,

La fORGe



We had too much fun with this section (Aka weird names we came up with)

Okay so we have been having a lot of fun 'naming' things Swiss styles, and there may be some words in this document that can be confusing for a new member of Feu Au Lac:

Feu au Lac: That's our burn! "Feu Au Lac" translates to "the lake is on fire". In Swiss Romande, "The lake is not on fire" is a common idiom which is intended to reassure people that there are no emergencies and there's probably no need to rush. We hope to make things a bit unexpected, so we are the Feu au Lac.

Experimentalia: That's our organization! We even have a website:
<https://experimentalia.org/>

La fORGe: The Feu au Lac ORG. Aka the engineers of this starship. Avoid Kaitlin if you don't want to see Star Trek memes.

La Patrouille: Known in other burns as "Rangers" our Patrouilleur.e.s are there to keep everyone safe and help folks that aren't feeling well to get to a space where they can find help.

La Douane: Known in other burns as "Gate" this is where we check you in, give you an explanation of what kind of crazy event we're running, and introduce you to our principles.

Shifts: It means 'volunteering' but is so much more. Burns work because there are no spectators – everyone helps us build together. Taking a shift is a great way to meet people, help build the event and the community, and ensure that we have enough people to make Feu au Lac run.

Gestionnaire de Papaye: originated In Afrikaaburns (south African burn). Worn by the person who has to handle any major problem.

10+3 principles of Burning Man

The Principles below are largely taken from the Burning Man principles.

Radical Inclusion

Anyone may be a part of Experimentalia. We welcome and respect the stranger. No prerequisites exist for participation in our community.

Gifting

Experimentalia is devoted to acts of gift giving. The value of a gift is unconditional. Gifting does not contemplate a return or an exchange for something of equal value.

Decommodification

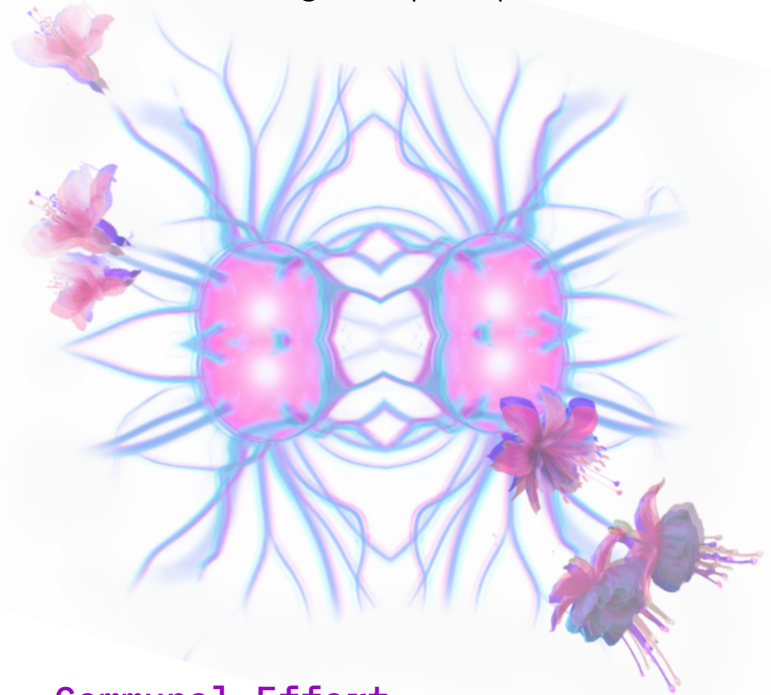
In order to preserve the spirit of gifting, our community seeks to create social environments that are unmediated by commercial sponsorships, transactions, or advertising. We stand ready to protect our culture from such exploitation. We resist the substitution of consumption for participatory experience.

Radical Self-Reliance

Experimentalia encourages the individual to discover, exercise and rely on their inner resources.

Radical Self-Expression

Radical self-expression arises from the unique gifts of the individual. No one other than the individual or a collaborating group can determine its content. It is offered as a gift to others. In this spirit, the giver should respect the rights and liberties of the recipient.



Communal Effort

Our community values creative cooperation and collaboration. We strive to produce, promote and protect social networks, public spaces, works of art, and methods of communication that support such interaction.

Civic Responsibility

We value civil society. Community members who organise events should assume responsibility for public welfare and endeavour to communicate civic responsibilities to participants. They must also assume responsibility for conducting events in accordance with local, state and federal laws.

Leaving No Trace

Our community respects the environment. We are committed to leaving no physical trace of our activities wherever we gather. We clean up after ourselves and endeavour, whenever possible, to leave such places in a better state than when we found them.

Participation

Our community is committed to a radically participatory ethic. We believe that transformative change, whether in the individual or in society, can occur only through the medium of deeply personal participation. We achieve being through doing. Everyone is invited to work. Everyone is invited to play. We make the world real through actions that open the heart.

Immediacy

Immediate experience is, in many ways, the most important touchstone of value in our culture. We seek to overcome barriers that stand between us and a recognition of our inner selves, the reality of those around us, participation in society, and contact with a natural world exceeding human powers. No idea can substitute for this experience.

and 3 extra ones we value...

Consent

(Go to VI. Consent for more info)

Every person has the right to make decisions about what is okay for their own body, emotions, and personal space. Give only what is appreciated, take only what is offered, and ALWAYS ASK before touching someone or taking a photograph. Silence is not acceptance – be sensitive to how people are behaving, and never assume that you have consent based on an outfit or behaviour, and especially be sensitive to if someone is not sober enough to give meaningful consent. Yes means yes, and anything else means no.

Photo Consent: Consent also applies to photography. Anybody who is identifiable in a photo you take has to be asked for consent. Consent for publishing a photo publicly, especially on social media, has to be given explicitly.

Each One Teach One

This phrase comes from enslaved or imprisoned peoples, who were often kept uneducated or illiterate. It is a rallying call of resistance: when we all learn, we all grow, and when we all teach, we all come to understand that we have more to offer than we might have known. In short, when knowledge is shared freely, the community grows stronger.

Safety Third

A bit of a facetious phrase used to wink at choices that are ... perhaps risky for the body, even if good for the soul. Safety third indicates the primacy of fun and adventure over too much caution.

The event

Feu Au Lac 2026 “Intervals” will take place on the following dates:

BUILD 17-18 August 2026

EVENT 19-22 August 2026

STRIKE 23-25 August 2026

Strike will start on Sunday 12pm (midday).
Everyone is asked to help as much as they can.

BE A HERO, STAY FOR STRIKE!!

Contact us

General
etincelle@experimentalialia.org

Art, workshops, grant
art@experimentalialia.org

Consent team
consent@experimentalialia.org

We also have a [Discord](#).

And all the useful links for the event are in our [Linktree](#)!



I.

Get involved

The magic of burn lies in co-creation. Experience it for yourself by finding a project and getting involved! **How to participate?** Here are a few ways to get involved:

Volunteering: Help us run the burn!

For this event to take place, the volunteering shift positions must be filled by the participants.

Link to [sign up](#) to your shift.

Everyone must sign up for **2 shifts per person**, this will be checked at gate on arrival, so better choose early to take the shift that fits you best.

Not sure about what shift to take ?

More info about how shifts work is available [here](#), or you can contact us.

Create a workshop

Do you have something to teach?

Yoga? Coffee-making?

Interpretive dance? Dancing with fire?

Tea ceremony? TEDtalk?

Composting? Tarot reading?

**Come and share your talents
with other burners!**

If you want your workshop a prime slot and room, announce it **before the 1st of August 2026 via this [form](#)**.

You can also ask questions on our Discord workshop channel.

Or by writing to art@experimentalialia.org.

Workshop spaces:

We will have different dedicated workshop spaces, open to all but requiring making a reservation in advance for planning and announcing the workshop schedule.

Bring art

Everyone is free to bring whatever art they like

All projects are welcome !

Register your art [here](#) and we will contact you concerning placement.

Please don't forget to communicate:

- . the **size** (for an optimal placement),
- . the **noise** (take into account noise levels in different areas for your project's needs... see the section on "noise" below for more detail).

All participants are also welcome to adopt a space and decorate it to their liking, as much or as little as they wish (see section 3. "orphan ideas")

The only limitation is:

Art involving fire must use the designated fire pit of the chalet. No fires elsewhere unless authorized by the fire warden.

Art grant: an art grant is available to help you bring your artsy ideas to life. Same form as above.

Dead line for applications: 15 July 2026.

Any questions?

Contact us at art@experimentalialia.org.

Music

All DJs and musicians are welcome! We'd love to establish a generous and diversified line-up of DJs and musicians, don't be shy!

You can contact Nityam directly (+41) 77 211 2588.

There are currently two stages:

The UdderGround : Located in the basement, this stage is dedicated to electronic music artists of the full BPM scale.

The Discow Floor : Dancefloor by the chalet, open only until 10pm. Playing all styles up to and including electronic music. During the day, slots can be reserved for playlists for amateurs who want to share their mood.

The music concept is explained in more detail in the chapter Security: Noise.

Would you like a DJ slot during the event? Sign up [here](#).

Costume Camp

Costume Camp is a space where everyone can experiment, change costumes and make themselves as fabulous as possible! It is a beautiful project held by Natacha, please be respectful.

Do you want to help Costume Camp?
It's easy, take a shift :)

Costume Camp rules

- . Costume as you wish.
- . Bring the costumes back when unused so others can enjoy them.
- . Bring the costumes back latest Sunday before strike !!



Final Workshop: Strike

“Dopamine micro-dosing or The departure symphony”

Join us for the very last workshop of the event: How to turn a “disaster zone” back into a “blank canvas”.

Strike is a collective effort which takes everyone's participation. This isn't just cleanup; it is Radical Coordination. We aren't just packing up boxes; we are conducting the symphony of departure.

Scientific fact:

Did you know that transforming chaos into order triggers a measurable dopamine release in the brain? That “addictive satisfaction” you feel when cleaning isn't just in your head, it is a **biological reward for creating structure**.

In short: stay for strike and leave no trace :)



Adopt an orphan idea!

Would you like to contribute, but don't quite know how yet? Adopt an orphan idea! Your talents and knowledge deserve to be shared, as do your most unexpected ideas. Here's some of ours that we don't have time to create:

Adopt a room

Many rooms/bathrooms/hallways still need burnering. If you've got a room you'd like to decorate, we'd love to hear from you. Any ideas?

Shiny stickers and Make-up

Bring your make-up and stickers for face and body, to decorate your new playa best-friend.

Room full of Balloons

Everything is in the name... max 40% human 60% balloons. We're still looking for balloons, but we need someone to blow them up.

Glory Nail

Put your hand in the hole and come out with new nail art that you didn't choose.

Or what about a BAR at Feu Au Lac 2026?

Your idea here!

Whatever you'd like to bring is welcome! Write us at art@experimentalialia.org or on our Discord.

II.

Practical Information

Location

Le Feu au Lac 2026 will take place at **Ferienheim Waldhaus, 3256 Riffenmatt**. The chalet is located above the village of Riffenmatt. Link to Google maps [here](#).

(46.7483510, 7.3800753)



Arrival

BUILD

17/8 - 19/8 2pm: No gate. Please let us know by email if you plan to arrive early for build: etincelle@experimentalia.org

EVENT

19/8: Gate open from 14:00 to 22:00

20/8: Gate open from 09:00 to 22:00

21/8: Gate open from 09:00 to **14:00**

22/8: Gate **CLOSED**

!! No arrival after 2PM Friday 21 August !!

Arrival outside these hours is not possible except for exceptions requested by e-mail at least 7 days before the event.



Public transportation

What's sexier than ecology?

Luckily, Le Feu au Lac is served by public transport. We encourage you to use this mode of transport. The nearest train stop is "**Schwarzenburg**". Then take the Postbus 612 to "**Riffenmatt Kreuzung**". The chalet is about **an hour walk** from this stop (3.6km).

Car-sharing option? Look in the [masterfile](#) if anyone could pick you up.

If you have heavy or difficult-to-carry equipment, please write us and we will find a solution.



Private vehicles

The chalet is easily accessible with all kinds of vehicles.

There is NO parking on site.
Only people with an RV/Van pass can park on the site.

Others are asked to park at the public parking lot "**Schwarzenbühl Nord**". Thank you for your understanding.

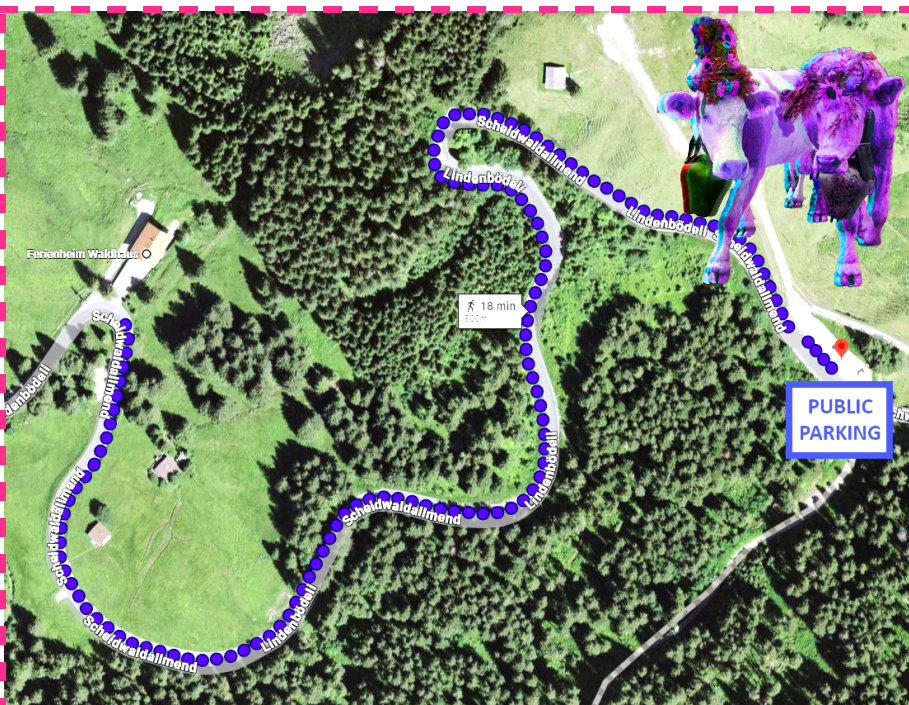
The drop off of your belongings is possible, but we ask you to park your vehicle directly to the public parking.

If you have any special requirements for artwork/camp, don't hesitate to contact us.

Public parking **Schwarzenbühl Nord, 3156 Rüschegg:**

- The distance from the parking lot to the chalet is 0.9 km, max **20 minutes on foot**.
- **No sleeping** in vehicles is allowed there.

- It is a **paid parking** (5CHF/day). The parking is payable only in cash or via a "PayByPhone" app. Be sure to take a ticket and display it in your car.
- We ask you to not "burnerise" the parking to avoid undue attention. Let's stay incognito (no music, camping, decorations) in the public parking lot.



Leaving No Trace

YOUR TRASH

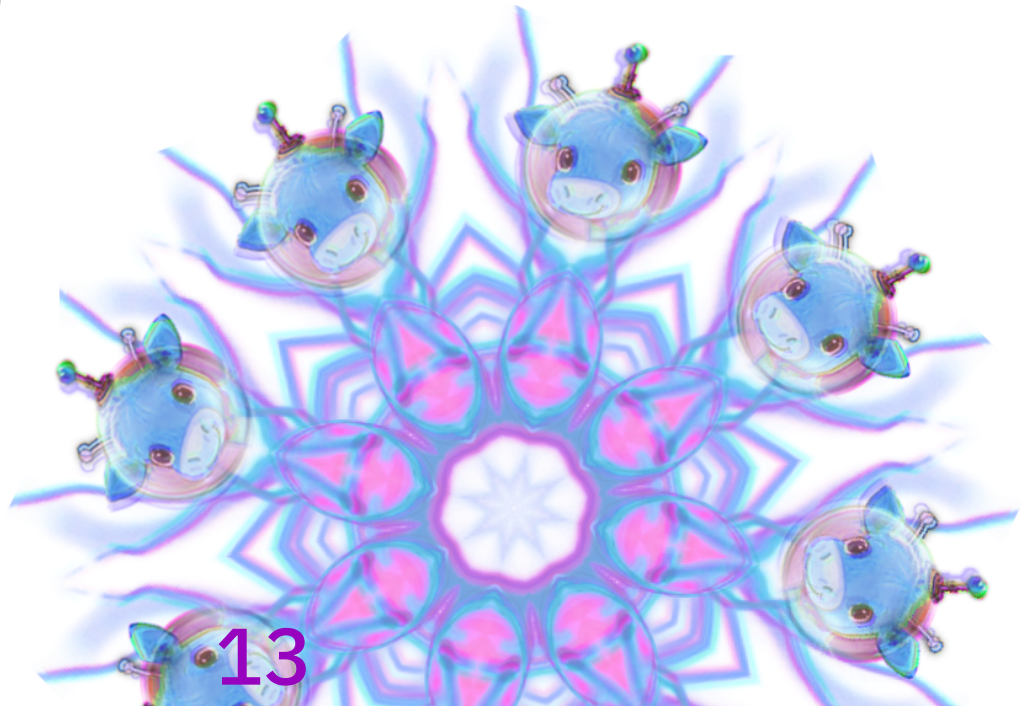
- . There will be limited central waste management but it won't have the capacity to take everyone's trash. Please only bring as little packaging as possible.
- . If you decide to bring some food or drinks to share, you are responsible for the leftovers as well as the packaging (empty bottle,...).
- . **Bring your trash home as much as possible.**

AFTER THE EVENT

- . If you sleep in a dorm, make sure you leave the room clean (broom it, check for MOOP).
- . If you sleep outdoors, make sure your spot is MOOP free when you leave.
- . **Help us to bring the common trash out of site by taking a trash bag or recycling bag with you when you leave!**

Non-exhaustive list of things to bring

- . Sunscreen
- . Flashlight
- . Earplugs
- . Insect repellent and personal first aid kit
- . Your own cup, plates, cutlery
- . Food and drinks for yourself and to share (+ cooking equipment)
- . A MOOP (Matter Out Of Place) bag for your trash and portable ashtray if needed
- . If you sleep in a dormitory: sheets or inner sheet or sleeping bag
- . Costumes, bold outfits :) (think radical self expression)
- . Things to share and to gift



Reselling your membership

You can resell your membership on Discord.

Note that fORGe is not responsible for the resale process, including payment. If you need to find an interested party, there may be some on the Discord channel.

PROCEDURE

- . Agree with the potential buyer on the method of payment (the fORGe is not responsible for guaranteeing payment in the case of resale).
- . Pass on the ticket to the buyer and to tell us the information:
etincelle@experimentalia.org
(you'll need the buyer's email address, first name and surname).
- . The buyer receives an e-mail from us with the allocation.



III. Sleeping

Dormitories

Dormitories are located inside the main chalet. The chalet is equipped with 45 beds divided into simply furnished dormitories.

Blankets/linens are not included in the dormitory, so please be sure to bring your own sheets, blankets, and inner sheet or sleeping bag.

You are responsible for striking your dorm together with the other people from the room. Please leave it as clean as you found it.

Campsite

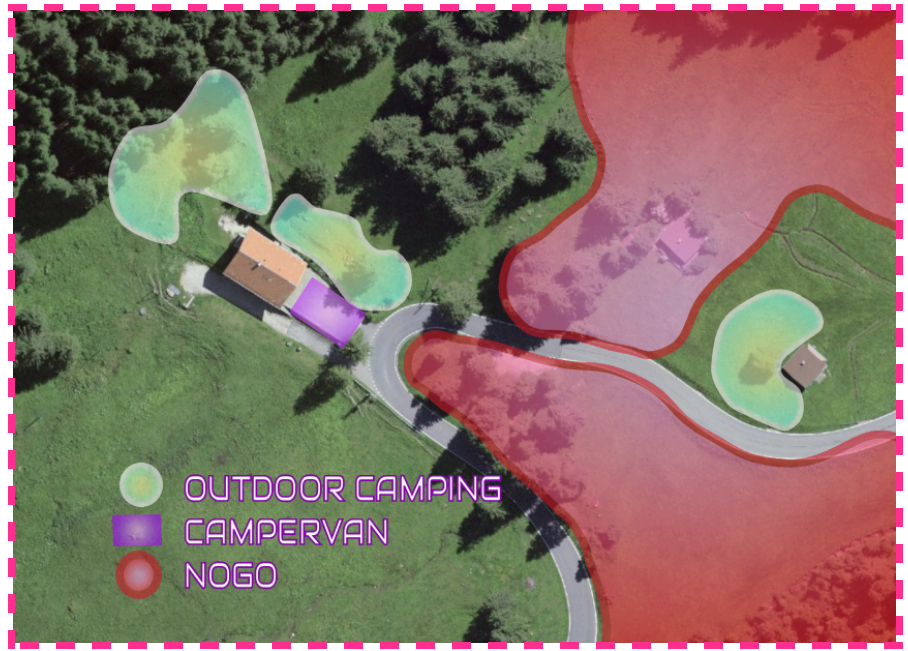
The campsite is located around the main chalet on its flattest area. A few tent spots will also be available at the small chalet next door.

This year's location is particularly steep. Camping spots are **VERY limited**, please do not leave room with your neighbors or you might be asked to move closer to them. Given these constraints, **we encourage you to take small tents and to share them as much as possible.**

How does the outdoor ticket work?

You can only pitch a tent if you got a **CAMPING PASS**. Your buddy can join you in your tent with an outdoor ticket, only

1 camping pass per tent is required. This allows us to manage the camping space at best, thanks for understanding.



Campervans

The van site is located at the entrance of the main and small chalet.

Due to limited space, **space between vans is limited**. We therefore ask you not to plan for any external structures. The van site is exclusively reserved for people sleeping in their vehicle, **no parking only is allowed**.

Only people with a VAN PASS can park on site.

Your buddy can join you in your van with an outdoor ticket, only **1 van pass per vehicle is required**.



IV. Eating

Radical self reliance applies!

There is **one big communal kitchen** in the chalet which is available to prepare your food.

- It is stocked with cooking equipment (pots, pans, knives, etc) but we ask that you bring your own plate/bowl/cup for eating.
- We suggest that you bring as much food as possible that does not require a refrigerator (due to limited space).
- The kitchen is not big enough for everyone at the same time, we recommend you to organise yourself in groups, and prepare easy one-pot meals.

We are open to culinary projects to feed a bunch of people and have an art grant for this, so please write to us with details if you would like to do this!

We're always looking for volunteers to help with the meal, coffee and tea in the morning. **Sign up for a kitchen shift!**

Security and Safety

Recognizing the tribe

Each participant will be wearing a wristband that will enable you to recognize them as burners.

La Patrouille also patrols for this purpose. If you see someone without a wristband in the space, ask them to leave (this is a private event). If they don't cooperate, call La Patrouille.

Please note that, as much as we love our bare- assed tribe members, non-sexualized nudity is only permitted in secluded spaces due to the proximity of the public road (we don't want to shock the cows).

Health

In the event of mental or physical health problems, the Patrouille will direct you to the place appropriate according to your needs.

In case of a life-threatening emergency, call 144 directly.

At the same time, ask someone to call la Patrouille (h24).

This enables us to ensure that the way is clear for the ambulance (role of the *Gestionnaire de Papaye*).

If you need to keep a medicine refrigerated, don't hesitate to contact the organization team in advance.

Hygiene

WC and sanitary facilities are available in the chalet.

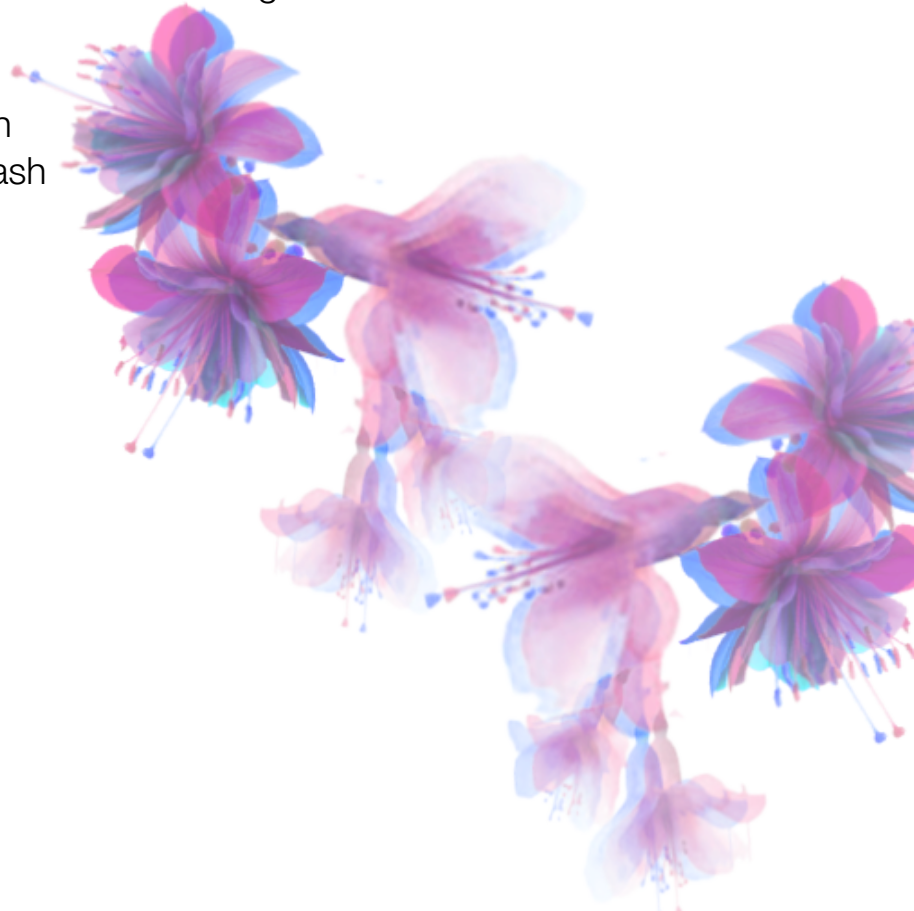
Two portable toilet cubicles will be installed at the entrance of the property.

Thank you for respecting nature and leaving no trace by relieving yourself only in the toilets.

We will provide toilet paper in the bathrooms, but please bring your own towels and shampoo if you plan to wash on-site.

A room with sinks is available for washing. A separate sanitary facility with **limited hot water** is available for having a wash (don't wait for warm water, it won't get warmer!).

We ask you to take short showers to be mindful of the other dirty hippies waiting their turn.



Fire

The effigy will burn on Saturday evening. Please follow the Fire Warden's instructions and stay within the safety perimeter **according to their safety instructions.**

For fires, use the designated fire pit. No fires permitted elsewhere, unless authorized by the fire warden.

Personal fires are not permitted, with the exception of art projects that have requested prior permission from the fire guardian (art@experimentalia.org). We are all responsible for preserving our natural surroundings.

Connecting to the electricity supply

Yes, you can connect to the grid we've installed! However, there are a few rules you should know to stay safe and avoid unpleasant surprises.

!! Electricity is just as dangerous at Feu Au Lac as it is in the real world !!

What type of connection?

Up to 2300 Watts (10A)? Use a single 3-wire, 1.5mm², type J cable (as in Switzerland).

More than 2300 Watts? Use multiple single-phase cables as described above, or a 5-pole CEE plug (red socket) rated at 16A, which provides up to 3 x 3700 Watts.

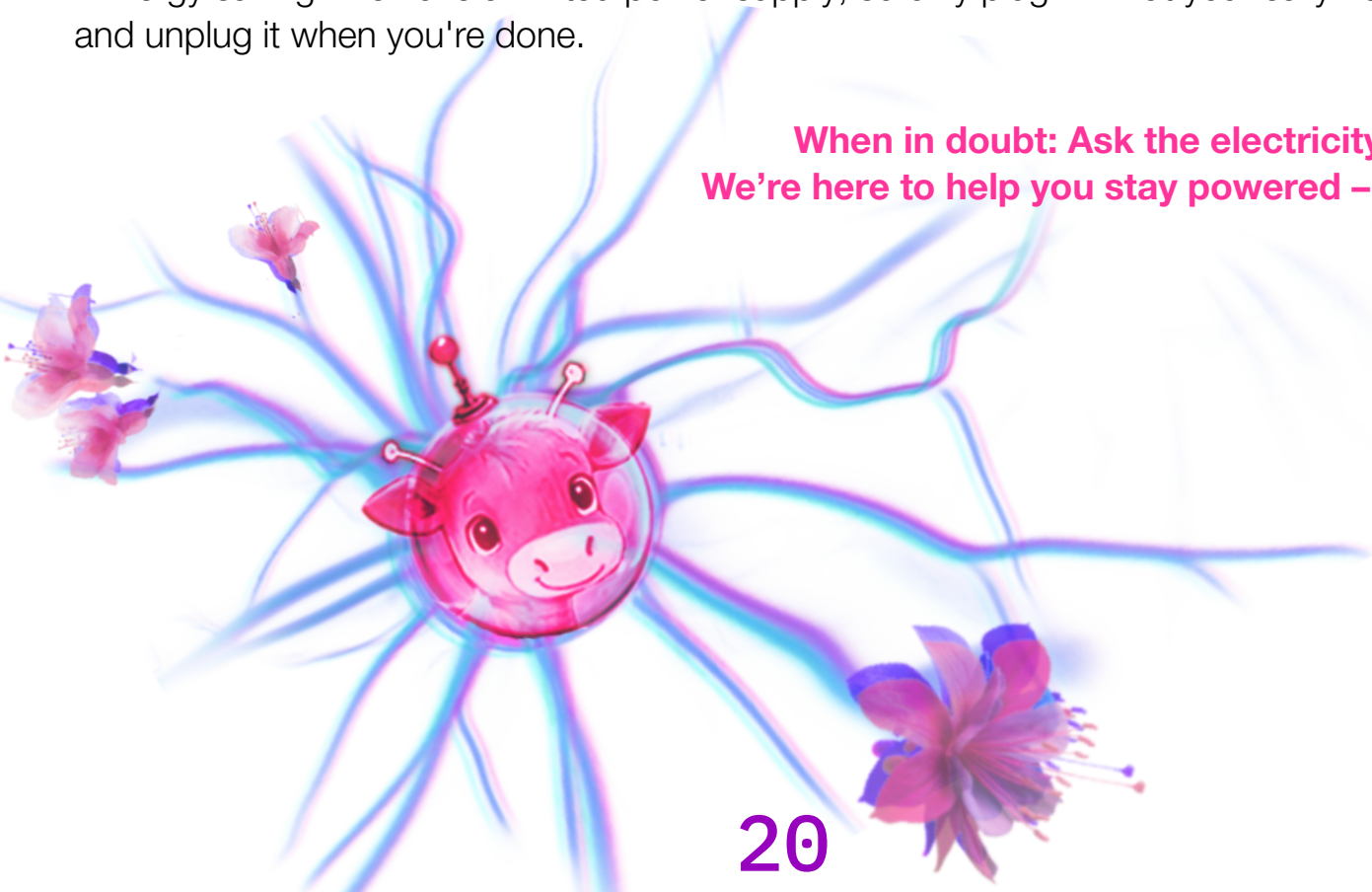
⚠ Safety & Responsibility

- . Cable condition: All cables must be in good condition, with no sketchy DIY fixes.
- . Connection protection: Properly protect your connections from rain, mud, and wandering feet.
- . Overload: Don't overload your line – you are responsible for what you plug in.
- . Energy saving: We have a limited power supply, so only plug in what you really need, and unplug it when you're done.

What You Need to Prepare

- . Main cable: A sufficient main cable to connect to the network.
- . Internal cables: Good quality cables for inside your camp.
- . Power requirement: Let us know how much power you plan to use.

**When in doubt: Ask the electricity team!
We're here to help you stay powered – safely.**



Noise

The noisy zone includes:

- . the **campsite**,
- . the **day floor** stage area with noise up to 80 dB and up to max. 10 p.m.
- . the **rave cave** with noise up to 93 dB and max. 6 a.m.

Entirely music-free hours are from 6 a.m. to 1 p.m.



Stage	Silent hours	Max decibels	Music style
Day floor	22h-13h	80 dB (chamber orchestra, child's disco)	All styles: hiphop, disco, reggae, jam session, trap, pop, musique live...
Rave cave	06h-13h	93 dB (dance club)	Electronic music.

Physical/mental health and safety

. **Physical safety:** in the event of a breach of consent or verbal or physical aggression, please contact La Patrouille immediately. We are all responsible for the safety of our community.

. Please do not let anyone from outside Feu au Lac into the event areas.

Each participant has a wristband that you can use to identify burners. La Patrouille is also there to help control this. If you see someone without a wristband in the spaces, ask them to leave (this is a private event). If they don't cooperate, call La Patrouille.

. **Police:** if you come across the police, do not interact. Call La Patrouille or a member of the fORGe who will notify le Gestionnaire de Papaye.

. **Mental health and safety:** during burns, it's normal to sometimes feel negative or overwhelming emotions. If you need help, don't hesitate to call La Patrouille. If you need a moment of calm, the **welfare room** is open 24/24 and you can go there to rest.

. **Sacred cows:** don't bother the cows or you will have bad karma forever.



Pets

Despite our love for our dogs, cats, chickens and other companions, **they are unfortunately not allowed during the event.**



Children

Unfortunately, Feu Au Lac will not be able to welcome families with children this year due to the venue's limited capacity, which we do not consider large enough to accommodate everyone comfortably.

As a result, Feu Au Lac 2026 will be an adults-only edition, with access restricted to **18+ only**.

Thank you for your understanding.

We are actively looking for a bigger/more suited site for next year – please get in touch if you have ideas.



VI. Consent

Consent is an essential ingredient for maintaining trust and building safety within our burner community. Consent goes well beyond simply matters of sex. These are a few important points about consent to keep in mind during your burn experience:

What happens at Feu Au Lac stays at Feu Au Lac

Respecting the privacy of everyone is essential. It makes us feel safer to know that whatever we are experiencing, trying, wearing, talking about, gifting and receiving is our own. You are welcome to share your personal journey, but always protect the anonymity and privacy of those involved in your burn experiences, unless you seek their explicit consent to do otherwise.

Ask before taking a photo

It feels safer, more in-the-moment and relaxed to have our phone cameras out of sight and stored away during a burn. However, we understand sometimes a moment arises when you see this cute little art piece or want to keep a memory alive in your digital memories. If you feel called to snap a picture, make sure that no one is in the background. If there are people caught in your frame, you must ask them if they're cool with it. *Didn't ask for it? Don't take it, it is not yours.*

Informed gifting

It is great to be generous with your goodies, but do it right! This is especially important when sharing substances: make sure everyone you are gifting knows what they are receiving, and check that they are in the headspace to offer you informed consent for your gift.

Physical interactions

Before initiating a physical connection, read the energy, observe the non-verbal messages being sent and verbally check in. If there's no *enthusiastic yes* in the air, it's a *no*. Personal differences exist so you can't assume a "yes", overriding the need to seek explicit consent when physically approaching someone. For instance, hugging when greeting each other is a very common physical interaction that we widely share in the Burner environment. Yet, while it is common doesn't mean it can be assumed as cool with everyone. You need to check in.



When consent is violated..

Burns can be messy and things go wrong sometimes.

Some examples of consent violations that may come up: being touched when you said no; someone not stopping a physical interaction when you said stop; someone joining you and a partner in an intimate moment without asking permission first; someone giving you a substance in your drink without asking first...

If your consent was violated and you need some help in addressing it, please reach out to our **Consent Leads** for confidential care and support. We will work with you, confidentially and with your consent, to try to prevent the same incident from happening again in our community. We also have a **Welfare Space** to go to for immediate support.

Please contact the site lead immediately if there's been a crime or you have emergency medical needs, though.

Sometimes people prefer to let us know about consent violations after the burn, so we have a confidential email account (only accessed by one Consent Lead, checked once a week): consent@experimentalia.org.

Sex and Consent

A useful framework for navigating consent in sexual and intimate interactions:

CONSENT IS FREELY GIVEN

In order to freely give their consent, the person being asked should:

- 1) not be coerced (feel a sense of threat, or force)
- 2) not be pressured (either explicitly or implicitly by a power imbalance, or by peer pressure)
- 3) be in a state where they can take in information, ask questions, and make decisions (factors affecting this include alcohol, substances, overwhelm)

CONSENT IS INFORMED

Everyone involved must know what's going to happen in as much detail as is necessary to them.

CONSENT IS AN EMBODIED YES

An active willingness to engage must be present: anything less should be considered a "no" until there is clarification.

A half-hearted response, silence, passivity or lack of resistance is not consent. If it's not a clear "FUCK YEAH!" then check in.

CONSENT: REQUIRES CHECKING IN AND CAN BE WITHDRAWN

Consent is reversible and can be withdrawn or downgraded any time, for any reason. Consent must be continuously present during the activity: it's very common to find the experience of doing something different to how we each imagined it would be when it was discussed.

Continuing something that no longer feels right is being out of consent.

No justification is needed to withdraw or downgrade consent.

CONSENT IS SPECIFIC

Consent is given for the act discussed and in that moment.

If the act is changing or escalating, check in and get some more consent.

There needs to be consent from everyone involved. If you want to join a group interaction first make sure every person gives consent.

VII. Legal Disclaimer

This event is entirely organised by volunteers. Everyone attending participates as both a volunteer and a participant, and the event operates on a very limited budget.

A burn is an inherently dangerous event, and participation may result in injury or death.

By attending Feu Au Lac 2026, **you agree to the following:**

- You attend and participate entirely at your own risk and are responsible for your own health, safety, insurance, and emergency preparedness.
- There is no medical team on site.
- The organisers, their representatives and volunteers accept no responsibility for injuries, loss or damage to property, the actions of participants, or the content of the event.
- You agree to indemnify and hold harmless the organisers and their representatives against any claims, demands, damages, losses, or legal costs arising from participation in the event.

We look forward to seeing you soon and creating this event together.



In the meantime, keep the flame burning!

